

PARENT PLEDGE

We are passionate about enabling your child to achieve their potential. We know that occasionally, some children need that extra support to stay on track, so our Parent Pledge outlines what that might look like for your child.

We will provide any student behind in English or Mathematics with timely support. Parents can expect regular assessments to identify their child's needs and additional support through the "waves" below.

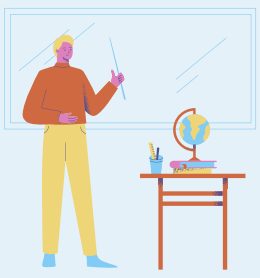
We ask that parents work in partnership with us to get the very best for their child.

TEACHER ASSESSMENTS

Teachers will use regular assessments to determine whether pupils are on track. If a pupil is not on track, the waves below will be applied and communicated to parents.



WAVE ONE: SUPPORT IN-CLASS



- Additional support from their class teacher through adaptations to learning that target their areas for development. These may include increased feedback, additional homework, scaffolded worksheets or sitting closer to the teacher.
- You will be contacted by your child's teacher on Class Charts to inform you of the steps being taken.
- Students may be placed on subject report, so you get more frequent feedback on their progress in lessons.

WAVE TWO: STUDY SUPPORT

If gaps in learning have not closed through Wave 1, students can expect the following:



- 4-weeks after-school Study Support placement in our library. Sessions take place from 15:30-16:25 Monday and/or Tuesday and are supported by a teacher and academic mentor.
- Students will be placed on subject report, so you get frequent feedback on their progress in lessons and in study support.

WAVE THREE: ACADEMIC INTERVENTIONS



If gaps in learning have not closed through Wave 2, students can expect the following:

- Small group intervention with a subject specialist to provide personalised academic support. Sessions take place from 15:30-16:25 Monday and/or Tuesday in the Library.
- Students will be placed on subject report, so parents receive more frequent feedback on their progress in lessons and in the study support sessions.

PARENTS' PLEDGE

We expect all our community to uphold the school's vision and values of aspiration, integrity, exploration and resilience.

This means working in partnership with the school to ensure:

- Our high [expectations of learning and behaviour](#) are supported in the home.
- Your child accesses the full curriculum through aiming for 100% attendance.
- Celebration of positive attitudes and achievement at home
- The school is kept informed of any issues affecting your child's learning or welfare.

Behaviour &
Attendance Handbook

